

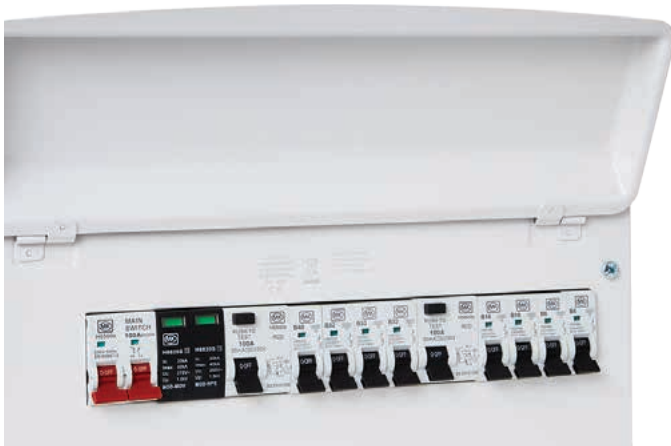
MK SENTRY CIRCUIT PROTECTION SOLUTIONS



MK SENTRY RANGE INTRODUCTION

The MK Sentry circuit protection product range has been in production for more than 40 years and through the license agreement its continued supply into the market is guaranteed. The extensive range fully complies with the requirements of the Wiring Regulations, and has the same full guarantees previously received with the offering.

The MK Sentry range of consumer units have been stylishly designed to blend in with its environment. The curved lines and slim line appearance mean it won't look out of place when installed in hallways, lounges or kitchens.



POPULATED UNITS

The pre-populated range of consumer units offers an off the shelf alternative available in 5 different sizes.



MCB

Available as B and C curve. Current range 6A-63A with a breaking capacity of 6kA.



RCD

Available as Type A, AC, S and B. Current range of 25A-100A and tripping capacity 10mA to 300mA. Breaking capacity 10kA.



AFDD

Available as B and C curve with Type A RCD. Current range of 6A-40A with a breaking capacity of 6kA.



RCBO

Available as B and C MCB curve, RCD Type A and AC. Current range 6A-50A and tripping current 30mA. Breaking capacity 6kA and 10kA. Standard height and miniature versions available.



SPD (SURGE)

Recommended for all low voltage electrical installations, it prevents the spread of over voltages in the electrical installations and protects the load.



ENCLOSURES

The empty consumer units enable specific configurations to suit required applications with the use of MCB's, RCD, RCBO, AFDD and SPD.



SUPPORTS LATEST BS7671:2018

Full range of products to support compliance with the latest edition of the Wiring Regulations, including full metal non-combustible enclosures for Consumer Units.



GUARANTEE

All products are guaranteed for 10 years (excluding SPD and AFDD 5 years). Offering all of the key products to complete an installation.



FEATURES AND BENEFITS

Enclosures



MANUFACTURED FROM CORROSION AND FIRE RESISTANT MATERIAL

Corrosion and fire resistant material, which ensures full compliance with latest legislation.



MULTIPLE EXTRA LARGE KNOCK OUTS

Aides and eases installation.



CURVED STYLISH DESIGN

Blends into the environment.



TOP HINGED DOOR

Prevents door being left open after use leading to a possible fire risk. Earth continuity provided through hinge mechanism no additional cable required.





CONSUMER UNIT SELECTION GUIDE

- STEP 1** Determine the type of consumer unit configuration required. e.g surge protected, split load, standard or combination of split load / single RCD or dual RCD. For each switch disconnector or RCD to be used allow 2 modular ways.
- STEP 2** Determine the number of outgoing circuits required. e.g cooker, lighting, ring main etc. For each circuit to be protected by an AFDD, RCBO or MCB allow 1 modular way.
- STEP 3** Determine the number of 'spare' modular ways required for future upgrades. For each 'spare' modular way select 1 sentry blank module – H5545S (cover mounted blanks supplied with consumer units).
- STEP 4** Now add together the total number of modular ways required.
- STEP 5** Select from our range of metal surface, recessed or stacked consumer units (using standard consumer units plus stacking kits). Choose the type and size most appropriate for your requirements.



FEATURES AND BENEFITS



BACKED OUT AND CAPTIVE COMBI-HEAD SCREWS

Allows simple and speedy installation.



EASILY REMOVABLE DIN RAIL

Simplifying and easing first fix.



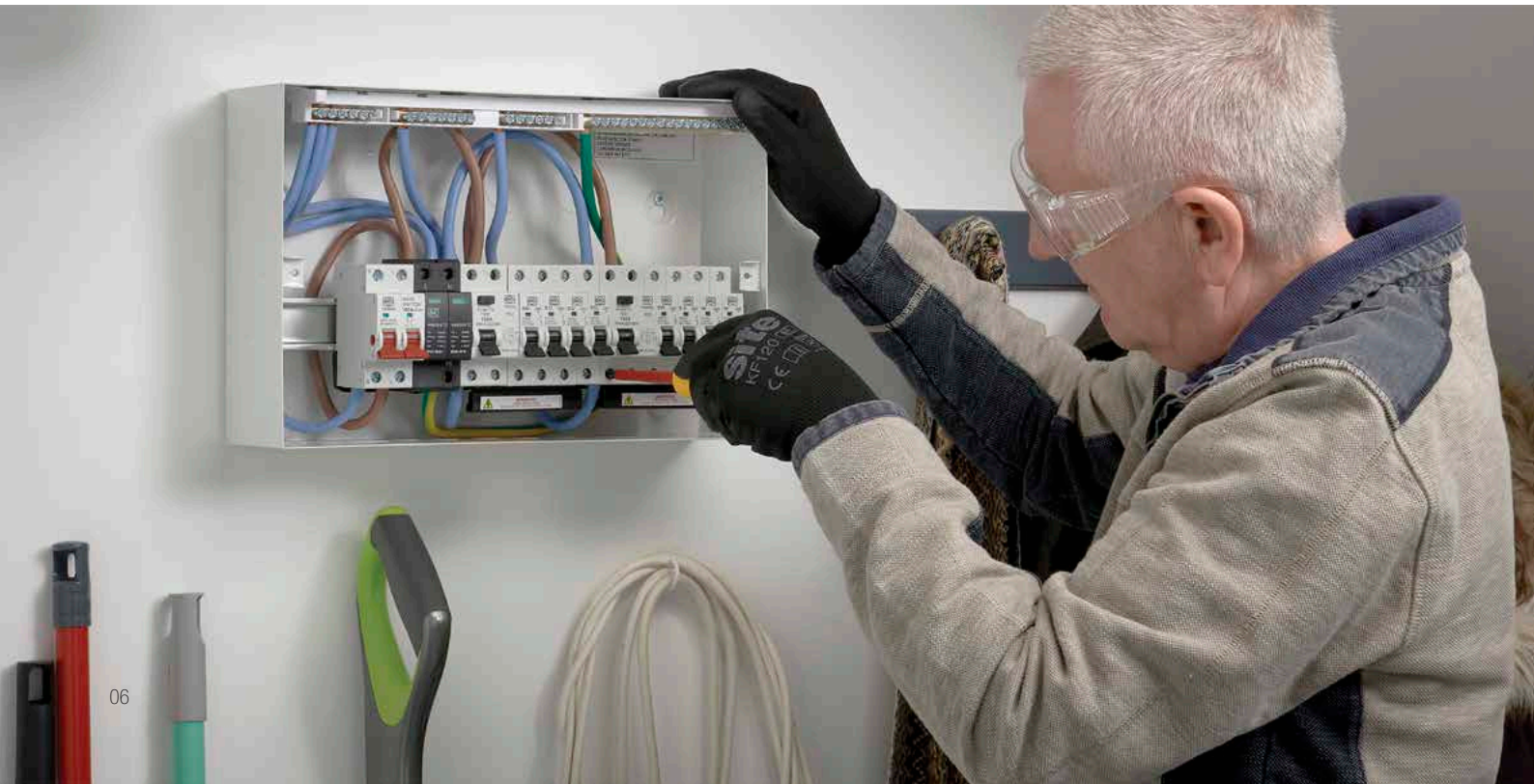
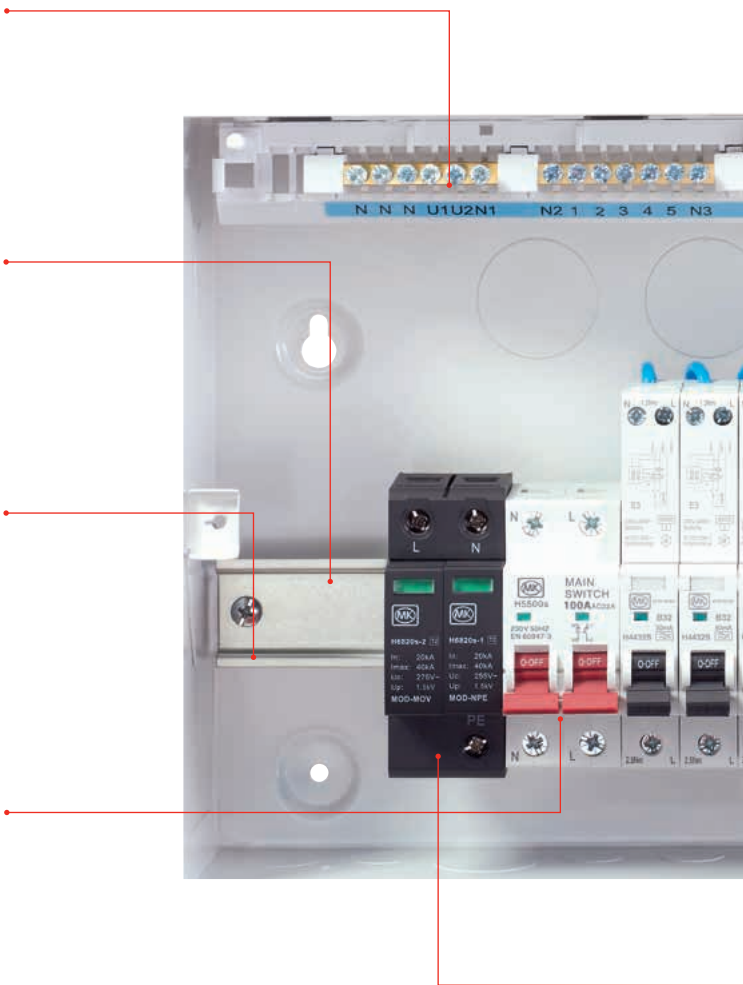
SUPPORTING DIN RAIL "T" BAR

Additional support to prevent bowing and twisting which has been raised for Improved cable routing.



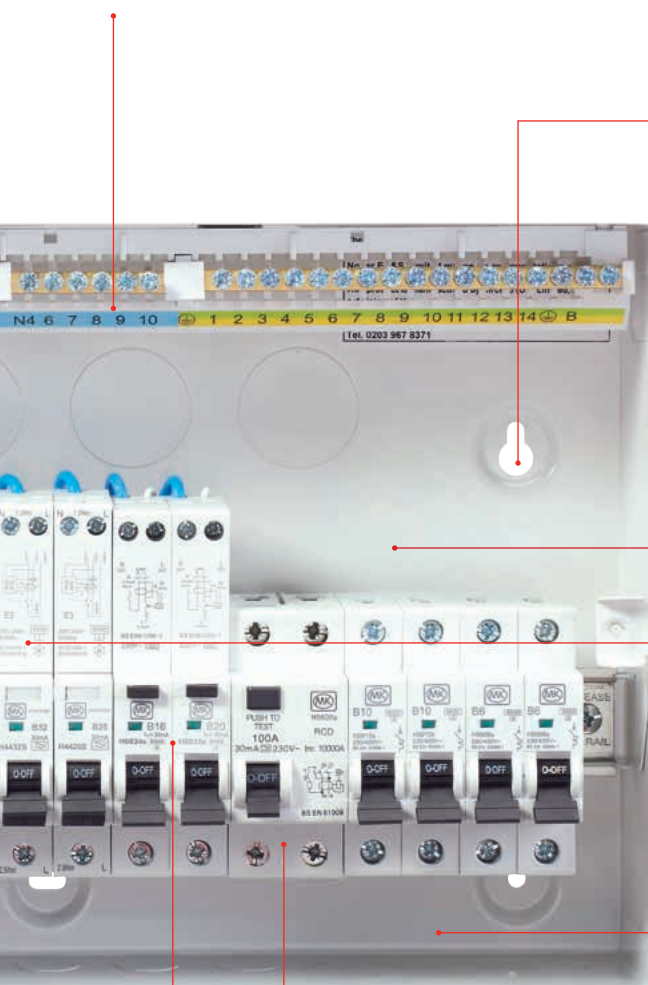
OFFSET INCOMER

Provides additional wiring space making mains input connections easier.



COLOUR CODED EARTH AND NEUTRAL TERMINAL

At top of unit for ease of wiring.



FIXING HOLES

Tripod fixing to cope with uneven surfaces.



ADDITIONAL WIRING SPACE

240mm height for increased wiring space.



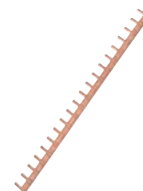
ARC FAULT DETECTION DEVICE (AFDD)

Provides additional protection against accidental fire in the home.



FLOATING BUSBAR SYSTEM

Gives maximum installation flexibility.



SURGE PROTECTION DEVICE (SPD)

Protects against voltage spikes e.g. lightning strikes.



RCBO

Protects electrical equipment from residual current and over current.



TYPE AC RCD

Detects AC fault currents only. Applicable to loads without electronic components.

TYPE B RCD

Detects AC, pulsating DC and smooth DC fault currents for equipment with electronic components e.g. EV charging.

TYPE S RCD

Detects AC fault currents only providing upstream selectivity.

TYPE A RCD

Detects AC fault currents and pulsating DC components. Applicable for single phase inverters, induction hobs, IT equipment, lighting (dimmer and LED drivers) & EV charging.



Consumer Units

METAL
ENCLOSURE ONLY
RECESSED



YR5608sMET
8 WAY ENCLOSURE ACCEPTS
8 ONE MODULE PRODUCTS
(1 INTEGRAL NEUTRAL BAR)



YR5612sMET
12 WAY ENCLOSURE
ACCEPTS
12 ONE MODULE PRODUCTS
(2 INTEGRAL NEUTRAL BAR)



YR5616sMET
16 WAY ENCLOSURE
ACCEPTS
16 ONE MODULE PRODUCTS
(3 INTEGRAL NEUTRAL BARS
FITTED WITH LINKS)



YR5621sMET
21 WAY ENCLOSURE
ACCEPTS
21 ONE MODULE
PRODUCTS
(3 INTEGRAL NEUTRAL
BARS FITTED WITH
LINKS)

DIMENSIONS:

	Width		Height		Depth
8 WAY	238	x	244	x	95-155mm
12 WAY	310	x	244	x	95-155mm
16 WAY	382	x	244	x	95-155mm
21 WAY	472	x	244	x	95-155mm

METAL
ENCLOSURE ONLY
SURFACE



Y5604sMET
4 WAY ENCLOSURE
ACCEPTS
4 ONE MODULE PRODUCTS
(1 INTEGRAL NEUTRAL BAR)



Y5608sMET
8 WAY ENCLOSURE
ACCEPTS
8 ONE MODULE PRODUCTS
(1 INTEGRAL NEUTRAL BAR)



Y5612sMET
12 WAY ENCLOSURE
ACCEPTS
12 ONE MODULE PRODUCTS
(2 INTEGRAL NEUTRAL
BARS FITTED WITH LINKS)



Y5616sMET
16 WAY ENCLOSURE
ACCEPTS
16 ONE MODULE
PRODUCTS (3 INTEGRAL
NEUTRAL BARS FITTED
WITH LINKS)



Y5621sMET
21 WAY ENCLOSURE
ACCEPTS
21 ONE MODULE
PRODUCTS (3 INTEGRAL
NEUTRAL BARS FITTED
WITH LINKS)

DIMENSIONS:

	Width		Height		Depth
4 WAY	144	x	244	x	116mm
8 WAY	238	x	244	x	116mm
12 WAY	310	x	244	x	116mm
16 WAY	382	x	244	x	116mm
21 WAY	472	x	244	x	116mm

Consumer Units

METAL
ENCLOSURE + 100A SWITCH DISCONNECTOR
SURFACE



Y5704sMET
4 WAY ENCLOSURE
100A SDC ACCEPTS
A FURTHER 2
ONE MODULE PRODUCTS



Y5708sMET
8 WAY ENCLOSURE
100A SDC ACCEPTS
A FURTHER 6
ONE MODULE PRODUCTS



Y5712sMET
12 WAY ENCLOSURE
100A SDC ACCEPTS
A FURTHER 10
ONE MODULE PRODUCTS



Y5716sMET
16 WAY ENCLOSURE
100A SDC ACCEPTS
A FURTHER 14
ONE MODULE PRODUCTS



Y5721sMET
21 WAY ENCLOSURE
100A SDC ACCEPTS
A FURTHER
19 ONE MODULE
PRODUCTS

METAL
FULLY POPULATED SPLIT LOAD ENCLOSURE
+ 100A SWITCH DISCONNECTOR + TYPE A RCD
SURFACE



Y8664sMET
12 WAY ENCLOSURE
100A SDC
2 X 100A 30MA RCD
6 X MCBs (2 X 6A, 1 X 16A,
2 X 32A AND 1 X 40A)



Y8665sMET
16 WAY ENCLOSURE
100A SDC
2 X 100A 30MA RCD
8 X MCBs (2 X 6A, 2 X 16A,
3 X 32A AND 1 X 40A)
ACCEPTS A FURTHER 2
ONE MODULE PRODUCTS



Y8666sMET
16 WAY ENCLOSURE
100A SDC
2 X 100A 30MA RCD
10 X MCBs (3 X 6A, 2 X 16A,
4 X 32A AND 1 X 40A)



Y8678sMET
21 WAY ENCLOSURE
100A SDC
2 X 100A 30MA RCD
12 X MCBs (3 X 6A, 2 X 16A,
2 X 20A, 4 X 32A AND
1 X 40A)
ACCEPTS A FURTHER 3
ONE MODULE PRODUCTS

DIMENSIONS:

	Width		Height		Depth
4 WAY	144	x	244	x	116mm
8 WAY	238	x	244	x	116mm
12 WAY	310	x	244	x	116mm
16 WAY	382	x	244	x	116mm
21 WAY	472	x	244	x	116mm



Consumer Units

METAL
FULLY POPULATED ENCLOSURE
+ TYPE A RCD
SURFACE



Y9550sMET
4 WAY ENCLOSURE
80A 30MA RCD
2 X MCBs
(1 X 6A AND 1 X 16A)



Y9551sMET
4 WAY ENCLOSURE
80A 30MA RCD
1 X MCB (1 X 50A)



Y9552sMET
8 WAY ENCLOSURE
80A 30MA RCD
6 X MCBs
(3 X 6A, 1 X 16A AND 2 X 20A)

METAL
POPULATED ENCLOSURE
+ 100A SWITCH DISCONNECTOR
+ TYPE A RCBO
SURFACE



Y9673sMET
12 WAY ENCLOSURE
100A SDC
6 X RCBOs
(2 X 6A, 1 X 16A, 2 X 32A AND
1 X 40A) ACCEPTS A FURTHER
4 ONE MODULE PRODUCTS

METAL
ENCLOSURE + 100A SWITCH DISCONNECTOR
+ SURGE DEVICE
SURFACE



YS5708sMET
8 WAY ENCLOSURE
100A SDC
1X SURGE ACCEPTS
A FURTHER 4
ONE MODULE PRODUCTS



YS5712sMET
12 WAY ENCLOSURE
100A SDC
1 X SURGE ACCEPTS
A FURTHER 8
ONE MODULE PRODUCTS



YS5716sMET
16 WAY ENCLOSURE
100A SDC
1 X SURGE ACCEPTS
A FURTHER 12
ONE MODULE PRODUCTS



YS5721sMET
21 WAY ENCLOSURE
100A SDC
1 X SURGE ACCEPTS
A FURTHER 17
ONE MODULE PRODUCTS

DIMENSIONS:

	Width		Height		Depth
4 WAY	144	x	244	x	116mm
8 WAY	238	x	244	x	116mm
12 WAY	310	x	244	x	116mm
16 WAY	382	x	244	x	116mm
21 WAY	472	x	244	x	116mm

Consumer Units

METAL

FULLY POPULATED ENCLOSURE + 100A SWITCH
DISCONNECTOR + SURGE DEVICE + TYPE A RCD

SURFACE



YS5704sMET

4 WAY ENCLOSURE
100A SDC
1 X SURGE



YS8666sMET

16 WAY ENCLOSURE
100A SDC
2 X 100A 30MA RCD
8 X MCBs (2 X 6A,
2 X 16A, 3 X 32A,
1 X 40A)
1 X SURGE



YS8678sMET

21 WAY ENCLOSURE
100A SDC
2 X 100A 30MA RCD
12 MCBs (3 X 6A,
2 X 16A, 2 X 20A,
4 X 32A, 1 X 40A)
1 X SURGE

DIMENSIONS:

	Width		Height		Depth
4 WAY	144	x	244	x	116mm
8 WAY	238	x	244	x	116mm
12 WAY	310	x	244	x	116mm
16 WAY	382	x	244	x	116mm
21 WAY	472	x	244	x	116mm



Switch Disconnectors Double Pole

TWO MODULE



PART NO.	DESCRIPTION
H5500s	100A 230V
H5560s	63A 230V

DIMENSIONS:	83 x 36 x 67mm
CABLE CAPACITY:	50mm ²

MCBs Single Pole

TYPE B CURVE ONE MODULE



PART NO.	DESCRIPTION
H5903s	3A 230V
H5906s	6A 230V
H5910s	10A 230V
H5916s	16A 230V
H5920s	20A 230V
H5925s	25A 230V
H5932s	32A 230V
H5940s	40A 230V
H5945s	45A 230V
H5950s	50A 230V
H5963s	63A 230V

Surge Device

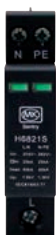
DOUBLE MODULE



PART NO.	DESCRIPTION
H6820s	Type 2 surge device
H6820s-1	Neutral replacement cartridge
H6820s-2	Line replacement cartridge

DIMENSIONS:	83 x 36 x 67mm
CABLE CAPACITY:	25mm ²

SINGLE MODULE



PART NO.	DESCRIPTION
H6821s	Type 2 surge device
H6821s-1	Replacement cartridge

DIMENSIONS:	83 x 18 x 67mm
CABLE CAPACITY:	25mm ²

TYPE C CURVE ONE MODULE



PART NO.	DESCRIPTION
H8703s	3A 230V
H8706s	6A 230V
H8710s	10 230V
H8716s	16A 230V
H8720s	20A 230V
H8725s	25A 230V
H8732s	32A 230V
H8740s	40A 230V
H8750s	50A 230V
H8763s	63A 230V

Suitable for installation in MK Sentry Consumer Units.
Positive contact status indication.

DIMENSIONS:	83 x 18 x 67mm
CABLE CAPACITY:	25mm ²
SHORT CIRCUIT BREAKING CAPACITY:	6kA

AFDDs Double Pole 6kA Type A

B CURVE
ONE MODULE



PART NO.	DESCRIPTION
H4406s	6A,230V, 30mA Tripping Current
H4410s	10A 230V, 30mA Tripping Current
H4416s	16A 230V, 30mA Tripping Current
H4420s	20A 230V, 30mA Tripping Current
H4432s	32A 230V, 30mA Tripping Current
H4440s	40A 230V, 30mA Tripping Current

C CURVE
ONE MODULE



PART NO.	DESCRIPTION
H4506s	6A 230V, 30mA Tripping Current
H4510s	10A 230V, 30mA Tripping Current
H4516s	16A 230V, 30mA Tripping Current
H4520s	20A 230V, 30mA Tripping Current
H4532s	32A 230V, 30mA Tripping Current
H4540s	40A 230V, 30mA Tripping Current

Suitable for installation in MK Sentry Consumer Units.
Positive contact status indication.

DIMENSIONS:	116 x 18 x 67mm
CABLE CAPACITY:	Live in 25mm ² Live Out 10mm ² Neutral Out 10mm ²
SHORT CIRCUIT BREAKING CAPACITY:	6kA

Miniature RCBO Double Pole 6kA

B CURVE
ONE MODULE



PART NO.	DESCRIPTION
H7732M	6A 230V, 30mA Tripping Current
H7733M	10A 230V, 30mA Tripping Current
H7734M	16A 230V, 30mA Tripping Current
H7735M	20A 230V, 30mA Tripping Current
H7736M	32A 230V, 30mA Tripping Current
H7737M	40A 230V, 30mA Tripping Current

C CURVE
ONE MODULE



PART NO.	DESCRIPTION
H6532M	6A 230V, 30mA Tripping Current
H6533M	10A 230V, 30mA Tripping Current
H6534M	16A 230V, 30mA Tripping Current
H6535M	20A 230V, 30mA Tripping Current
H6536M	32A 230V, 30mA Tripping Current
H6537M	40A 230V, 30mA Tripping Current

Suitable for installation in MK Sentry Consumer Units.
Positive contact status indication.

DIMENSIONS:	85 x 18 x 67mm
CABLE CAPACITY:	Live In 25mm ² Live Out 10mm ² Neutral Out 10mm ²
SHORT CIRCUIT BREAKING CAPACITY:	6kA



RCBOs with Solid Neutral Single Pole 6kA TYPE A

B CURVE

ONE MODULE



PART NO.	DESCRIPTION
H6832s	6A 230V, 30mA Tripping Current
H6833s	10A 230V, 30mA Tripping Current
H6834s	16A 230V, 30mA Tripping Current
H6835s	20A 230V, 30mA Tripping Current
H6836s	32A 230V, 30mA Tripping Current
H6837s	40A 230V, 30mA Tripping Current
H6838s	50A 230V, 30mA Tripping Current

RCBOs with Solid Neutral Single Pole 6kA TYPE AC

B CURVE

ONE MODULE



PART NO.	DESCRIPTION
H7932s	6A 230V, 30mA Tripping Current
H7933s	10A 230V, 30mA Tripping Current
H7934s	16A 230V, 30mA Tripping Current
H7935s	20A 230V, 30mA Tripping Current
H6310s	32A 230V, 10mA Tripping Current
H7936s	32A 230V, 30mA Tripping Current
H7937s	40A 230V, 30mA Tripping Current
H7938s	45A 230V, 30mA Tripping Current
H7939s	50A 230V, 30mA Tripping Current

RCBOs with Solid Neutral Single Pole 10kA TYPE A

B CURVE

ONE MODULE



PART NO.	DESCRIPTION
H7732s	6A 230V, 30mA Tripping Current
H7733s	10A 230V, 30mA Tripping Current
H7734s	16A 230V, 30mA Tripping Current
H7735s	20A 230V, 30mA Tripping Current
H7736s	32A 230V, 30mA Tripping Current
H7737s	40A 230V, 30mA Tripping Current
H7738s	50A 230V, 30mA Tripping Current

RCBOs with Solid Neutral Single Pole 6kA TYPE AC

C CURVE

ONE MODULE



PART NO.	DESCRIPTION
H8932s	6A 230V, 30mA Tripping Current
H8933s	10A 230V, 30mA Tripping Current
H8934s	16A 230V, 30mA Tripping Current
H8935s	20A 230V, 30mA Tripping Current
H8936s	32A 230V, 30mA Tripping Current
H8937s	40A 230V, 30mA Tripping Current
H8938s	50A 230V, 30mA Tripping Current

Suitable for installation in MK Sentry Consumer Units.
Positive contact status indication.

DIMENSIONS:	114 x 18 x 67mm
CABLE CAPACITY:	Live In 25mm ² Neutral In 25mm ² Live Out 10mm ² Neutral Out 10mm ²
SHORT CIRCUIT BREAKING CAPACITY:	6kA/10kA

RCBOs with Solid Neutral Single Pole 10kA TYPE AC

C CURVE
ONE MODULE



PART NO.	DESCRIPTION
H6532s	6A 230V, 30mA Tripping Current
H6533s	10A 230V, 30mA Tripping Current
H6534s	16A 230V, 30mA Tripping Current
H6535s	20A 230V, 30mA Tripping Current
H6536s	32A 230V, 30mA Tripping Current
H6537s	40A 230V, 30mA Tripping Current
H6538s	50A 230V, 30mA Tripping Current

Suitable for installation in MK Sentry Consumer Units.
Positive contact status indication.

DIMENSIONS:	114 x 18 x 67mm
CABLE CAPACITY:	Live In 25mm ² Live Out 10mm ² Neutral Out 10mm ²
SHORT CIRCUIT BREAKING CAPACITY:	10kA



RCD Double Pole 10kA Type AC

25 AMP
TWO MODULE



PART NO.	DESCRIPTION
H7825s	25A 230V, 30mA Tripping Current

40 AMP
TWO MODULE

PART NO.	DESCRIPTION
H7840s	40A 230V, 30mA Tripping Current

63 AMP
TWO MODULE

PART NO.	DESCRIPTION
H7860s	63A 230V, 30mA Tripping Current

80 AMP
TWO MODULE

PART NO.	DESCRIPTION
H7880s	80A 230V, 30mA Tripping Current

100 AMP
TWO MODULE

PART NO.	DESCRIPTION
H7800s	100A 230V, 30mA Tripping Current

Suitable for installation in MK Sentry Consumer Units.
Positive contact status indication.

DIMENSIONS:	83 x 36 x 67mm
CABLE CAPACITY:	25-63A 25mm ² 80-100A 36mm ²

RCD Double Pole 10kA Type A

25 AMP
TWO MODULE



PART NO.	DESCRIPTION
H5325s	25A 230V, 10mA Tripping Current
H5625s	25A 230V, 30mA Tripping Current
H5725s	25A 230V, 100mA Tripping Current
H9325s	25A 230V, 300mA Tripping Current

40 AMP
TWO MODULE

PART NO.	DESCRIPTION
H5640s	40A 230V, 30mA Tripping Current
H5740s	40A 230V, 100mA Tripping Current

63 AMP
TWO MODULE

PART NO.	DESCRIPTION
H5660s	63A 230V, 30mA Tripping Current
H5760s	63A 230V, 100mA Tripping Current

80 AMP
TWO MODULE

PART NO.	DESCRIPTION
H5680s	80A 230V, 30mA Tripping Current
H5780s	80A 230V, 100mA Tripping Current
H9380s	80A 230V, 300mA Tripping Current

100 AMP
TWO MODULE

PART NO.	DESCRIPTION
H5600s	100A 230V, 30mA Tripping Current
H5700s	100A 230V, 100mA Tripping Current
H9300s	100A 230V, 300mA Tripping Current

Suitable for installation in MK Sentry Consumer Units.
Positive contact status indication.

DIMENSIONS:	83 x 36 x 67mm
CABLE CAPACITY:	25-63A 25mm ² 80-100A 35mm ²

RCD Double Pole 10kA Type S and Type B

TWO MODULE



PART NO.	DESCRIPTION
H6900s	100A 230V, 100mA Tripping Current Time Delayed Type S
H9600s	100A 230V, 30mA Tripping Current Type B

Suitable for installation in MK Sentry Consumer Units.
Positive contact status indication.

DIMENSIONS:	83 x 36 x 67mm
CABLE CAPACITY:	35mm ²

RCD Four Pole Type A

25 AMP FOUR MODULE



PART NO.	DESCRIPTION
H6625s	25A 230/400V, 30mA Tripping Current
H9225s	25A 230/400V, 100mA Tripping Current

40 AMP FOUR MODULE

PART NO.	DESCRIPTION
H6640s	40A 230/400V, 30mA Tripping Current
H9240s	40A 230/400V, 100mA Tripping Current

63 AMP FOUR MODULE

PART NO.	DESCRIPTION
H6663s	63A 230/240V, 30mA Tripping Current
H9263s	63A 230/400V, 100mA Tripping Current
H9463s	63A 230/400V, 300mA Tripping Current

Suitable for installation in MK Sentry Consumer Units.
Positive contact status indication.

DIMENSIONS:	83 x 72 x 67mm
CABLE CAPACITY:	25mm ²



Accessories

16MM² CABLE KITS



PART NO.	DESCRIPTION
H5563s	Load Kit Consists of 3 Cables (2 Neutral And 1 Live)
H5565s	Multi-Incomer Kit Consists of 1 Neutral Cable
H5567s	Cable Kit for Switch Plus Triple Rcd Arrangement Consists of Triple Live Cable
H5561s	Cable Kit for Stacked Sentry Units
H5569s	Cable Kit for Surge and Twin Rcd
H5568s	Cable Kit for Switch and Twin Rcd Consists of Dual Neutral, 3 Neutral and Dual Live Cables

LOCKING DEVICE



PART NO.	DESCRIPTION
H5593s RED	Metal enclosure locking device

TERMINAL BAR



PART NO.	DESCRIPTION
H5594s	Terminal bar link

25MM² CABLE KITS



PART NO.	DESCRIPTION
H6563s	Split-Load Kit Consists of 3 Cables (2 Neutral and 1 Live)
H6565s	Multi-Incomer Kit Consists of 1 Neutral Cable
H6567s	Cable Kit for Switch Plus Triple Rcd Arrangement Consists of Triple Live Cable
H6561s	Cable Kit for Stacked Sentry Units
H6569s	Cable Kit for Surge and Twin Rcd
H6568s	Cable Kit For Switch and Twin Rcd Consists of Dual Neutral, 3 Neutral And Dual Live Cables

REPLACEMENT LID



PART NO.	DESCRIPTION
H9004sMET	4 Way replacement lid
H9008sMET	8 Way replacement lid
H9012sMET	12 Way replacement lid
H9016sMET	16 Way replacement lid
H9021sMET	21 Way replacement lid

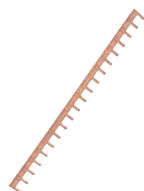
Accessories

MCB BLANK



PART NO.	DESCRIPTION
H5544s	Grey designed to fill unused modules in MK Sentry consumer units and small enclosures

BUSBARS



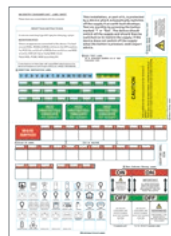
PART NO.	DESCRIPTION
H5511s	Busbar 11 module
H5590s	Busbar 20 module

BUSBAR COVER



PART NO.	DESCRIPTION
HAX26s	Busbar cover suitable for insulating the busbars H5511s and H5590s 10 module

CONSUMER UNIT LABELS



PART NO.	DESCRIPTION
H5599s	Consumer Unit Labels Additional Printed and Blank Labels, for Identifying Devices and Circuits On Single RCD Boards

STACKING KITS



PART NO.	DESCRIPTION
H6061sMET	12 Way metal consumer unit stacking kit
H6062sMET	16 Way metal consumer unit stacking kit
H6063sMET	21 Way metal consumer unit stacking kit



2022 Products

TYPE AC RCD



PART NO.	DESCRIPTION
H5880s	80A 230V, 300mA Tripping Current
H6125s	25A 230V, 100mA Tripping Current
H6140s	40A 230V, 100mA Tripping Current
H6180s	80A 230V, 100mA Tripping Current
H6100s	100A 230V, 100mA Tripping Current
H6325s	25A 230V, 10mA Tripping Current
H6463s	63A 230/240V, 30mA Tripping Current
H6525s	25A 230/400V, 100mA Tripping Current
H6540s	40A 230/400V, 100mA Tripping Current
H7840s	40A 230V, 30mA Tripping Current

TYPE AC RCBO



PART NO.	DESCRIPTION
H6310s	6A 230V, 30mA Tripping Current
H6732s	6A 230V, 30mA Tripping Current
H6733s	10A 230V, 30mA Tripping Current
H6734s	16A 230V, 30mA Tripping Current
H6735s	20A 230V, 30mA Tripping Current
H6736s	32A 230V, 30mA Tripping Current
H6737s	40A 230V, 30mA Tripping Current
H6738s	50A 230V, 30mA Tripping Current

2022 Products

CONSUMER UNITS Y5 / Y6 / Y7



PART NO.	DESCRIPTION
Y5662sMET	12 WAY MCU, WITH 100A SWITCH and 80A RCD
Y5666sMET	16 WAY MCU, WITH 100A SWITCH and 2 X 63A RCD
Y5681sMET	21 WAY MCU, WITH 100A SWITCH and 63A and 80A RCD
Y5684sMET	21 WAY MCU, WITH 100A SWITCH and 80A RCD
Y5686sMET	16 WAY MCU, WITH 100A SWITCH and 63A and 80A RCD
Y5687sMET	21 WAY MCU, WITH 100A SWITCH and 2 X 80A RCD
Y5688sMET	16 WAY MCU, WITH 100A SWITCH and 2 X 80A RCD
Y6550sMET	4 WAY MCU, WITH 63A RCD and 2 X MCB
Y6551sMET	4 WAY MCU, WITH 63A RCD and 12 X MCB
Y6552sMET	8 WAY MCU, WITH 63A RCD and 6 X MCB
Y7663sMET	12 WAY MCU, WITH 100A SWITCH and 6 X MCB and 2 X RCBO
Y7664sMET	12 WAY MCU, WITH 100A SWITCH and 2 X 63A RCD and 6 X MCB
Y7664sMET-A	12 WAY MCU, WITH 100A SWITCH and 2 X 63A TYPE A RCD and 6 X MCB
Y7665sMET	16 WAY MCU, WITH 100A SWITCH and 2 X 63A RCD and 8 X MCB
Y7665sMET-A	16 WAY MCU, WITH 100A SWITCH and 2 X 63A TYPE A RCD and 8 X MCB
Y7666sMET	16 WAY MCU, WITH 100A SWITCH and 2 X 63A RCD and 10 X MCB
Y7666sMET-A	16 WAY MCU, WITH 100A SWITCH and 2 X 63A TYPE A RCD and 10 X MCB
Y7673sMET	12 WAY MCU, WITH 100A SWITCH and 6 X RCBO
Y7678sMET	21 WAY MCU, WITH 100A SWITCH and 2 X 63A and 80A RCD and 12 X MCB



NEW PRODUCTS 2023

Miniature RCBO Double Pole 6kA

B CURVE

ONE MODULE



PART NO.	DESCRIPTION
H7732M	6A 230V, 30mA Tripping Current
H7733M	10A 230V, 30mA Tripping Current
H7734M	16A 230V, 30mA Tripping Current
H7735M	20A 230, 30mA Tripping Current
H7736M	32A 230V, 30mA Tripping Current
H7737M	40A 230V, 30mA Tripping Current

C CURVE

ONE MODULE



PART NO.	DESCRIPTION
H6532M	6A 230V, 30mA Tripping Current
H6533M	10A 230V, 30mA Tripping Current
H6534M	16A 230V, 30mA Tripping Current
H6535M	20A 230, 30mA Tripping Current
H6536M	32A 230V, 30mA Tripping Current
H6537M	40A 230V, 30mA Tripping Current

Suitable for installation in MK Sentry Consumer Units.
Positive contact status indication.

DIMENSIONS:	85 x 18 x 67mm
CABLE CAPACITY:	Live In 25mm ² Live Out 10mm ² Neutral Out 10mm ²
SHORT CIRCUIT BREAKING CAPACITY:	6kA

RCD Double Pole 10kA Type B

TWO MODULE



PART NO.	DESCRIPTION
H9600s	100A 230V, 30mA Tripping Current Type B

Suitable for installation in MK Sentry Consumer Units.
Positive contact status indication.

DIMENSIONS:	83 x 36 x 67mm
CABLE CAPACITY:	35mm ²

Notes





Greenbrook Electrical

West Road
Harlow, Essex
CM20 2BG
United Kingdom
Phone: 01279 772700
Email: info@greenbrook.co.uk
www.mkscircuitprotection.co.uk

Made in China

The MK Trademark is used under license from Novar ED&S Limited
Novar ED&S Limited makes no representations or warranties
with respect to these products.

These products are manufactured by Yihua, and distributed by
GreenBrook Electrical

